

October 2020



Photocell

Application note

Date: October 29, 2020

Rev. 1.1

Technology Partner SILVAIR

LEGAL NOTICE DISCLAIMER

This document and the contents of all materials available from this document (the "Content") are subject to copyright (including patent protection) by TruBlu, unless otherwise indicated. Copyright is not claimed as to any part of the intellectual property owned by Bluetooth SIG, Inc. Product names and markings noted herein may be trademarks of their respective owners. Accordingly, the Content may not be republished in any way without the prior written consent of TruBlu. In doing so, you may not remove or alter, or cause to be removed or altered, any copyright, trademark, trade name, service mark, or any other proprietary notice or legend appearing on any of the Content. Modification or use of the Content except as expressly provided herein violates TruBlu's intellectual property rights. Neither title nor intellectual property rights are transferred to you by access to this document.

The information provided in this document is provided "AS-IS" and TruBlu specifically disclaims any and all express, implied or statutory warranties, including the implied warranties of fitness for a particular purpose, and of merchantability and against infringement. No person is authorized to make any warranty or representation on behalf of TruBlu concerning the performance of the described services or information. The user of the document assumes all responsibility and liability for proper and safe handling of the goods and services. Further, the user indemnifies TruBlu from all claims arising from the handling or use of the goods and services. It is the user's responsibility to take any and all appropriate precautions with regard to electrostatic discharge and any other technical or legal concerns. Users handling electrostatic discharge installation must have appropriate electronics training and observe good standards of engineering practice. Except as expressly indicated in writing, TruBlu services are not designed for use in medical, life-saving, or life-sustaining applications or for any other application in which the failure of the TruBlu service could result in personal injury or death. The information contained in this document may not be used contrary to applicable law or any purpose other than specified in the document i.e. for a lighting control solution.

Unless otherwise specified in the writing, to the maximum extent permitted by applicable law. TruBlu SHALL NOT BE RESPONSIBLE OR LIABLE TO ANYBODY FOR ANY DIRECT or INDIRECT, SPECIAL, INCIDENTAL, PUNITIVE, OR CONSEQUENTIAL DAMAGES, INCLUDING, BUT NOT LIMITED TO, LOSS OF REVENUES, LOSS OF PROFITS OR LOSS OR INACCURACY OF DATA, EVEN IF ADVISED OF THE POSSIBILITY OF SUCH DAMAGES, OR INCURRED IN USING THIS DOCUMENT OR TruBlu'S SERVICES AND/OR PRODUCTS. TruBlu'S CUMULATIVE LIABILITY FOR ANY AND ALL DAMAGES IS LIMITED TO THE AMOUNTS PAID TO TruBlu. BY THE USER IN THE LAST 12 (TWELVE) MONTHS FOR THE PARTICULAR PRODUCTS AND/OR SERVICES WITH RESPECT TO WHICH A CLAIM IS MADE. TruBlu HAS AGREED WITH THE USER THAT THESE LIMITATIONS WILL SURVIVE AND APPLY EVEN IF ANY LIMITED REMEDY SPECIFIED IN THIS AGREEMENT IS FOUND TO HAVE FAILED OF ITS ESSENTIAL PURPOSE.

The parameters provided in this document may vary over time. All operating parameters, including typical parameters, must be validated by each customer's technical experts.

Except as expressly indicated in writing, no license, express or implied, to any intellectual property rights is granted by this document or by any conduct of TruBlu.

The document and information provided in this document is proprietary to TruBlu, and unless otherwise indicated in writing, TruBlu reserves the right to make any changes to the information in this document or to any products and services at any time without notice.

The information contained in this documentation is considered confidential.

The document as well as the rights and obligations of TruBlu and of the user of the documentation and/or TruBlu'S services hereunder shall be governed by Polish regulations. The user of the document and TruBlu agree to submit to the exclusive jurisdiction of, and venue in, the courts of California, in any dispute arising out of or relating to this agreement. The application of the "United Nations Convention on Contracts for the International Sale of Goods" is hereby excluded. All required or permitted notices to TruBlu under this document will be made in writing, make reference to this document, and be delivered by hand, or dispatched by prepaid air courier or by registered or certified airmail, postage prepaid, addressed as follows:

McWong International Inc.

1921 Arena Blvd.

Sacramento, CA 95834

Photocell

What is a photocell?

A photocell is a lighting control strategy that allows to control lighting depending on the level of ambient light, i.e. whether it is dark or bright in the first place. Also, occupancy sensors may be used to adjust the light level when the motion is detected (it is optional).

Typical applications for this lighting control include outdoor lighting, e.g. area lighting, parking lots, parking structures where light is switched on at dawn, and switched off at dusk. This solution can provide significant benefits, including energy and maintenance costs savings.

Note: If you are looking for a lighting control where the light is automatically adjusted based on the availability of daylight while maintaining the desired light level in the space, please see Daylight harvesting.

Required items

To use the photocell scenario in your project, you must have:

- Light sensor
- Occupancy sensor (optional) - if you want to adjust the light level based on the occupancy
- Access to the project in the TruBlu Commissioning web & mobile apps
- A lighting zone with the photocell profile selected in TruBlu Commissioning

How does it work?

- **Dusk to dawn control**

When the light level reported by the light sensor decreases below a certain night threshold (dusk), the light switches on to a defined level, e.g. 30%. When the light level increases above the day threshold (dawn), the light switches off (or dims to a certain level) regardless of whether a motion or occupancy is detected or not.

- **Hysteresis**

Separate day & night threshold levels can be defined in order to prevent light from switching frequently on/off at the transition between day and night.

- **Transition delay**

The transition between day & night settings is delayed by 60s after the light level reaches the threshold to protect against changes in light due to intense but temporary changes in light level, e.g. temporary light reflection or lighting of a passing car. The light level needs to remain at least 60s below the day threshold or above the day threshold.

- **Occupancy control**

The light level during the day or night can be adjusted to a separate level when the motion is detected.

- **Manual override**

Users can override the setting and adjust the light level using manual controls. Such light level stays until the user changes it, or times out after a defined time (after the zone is vacant).

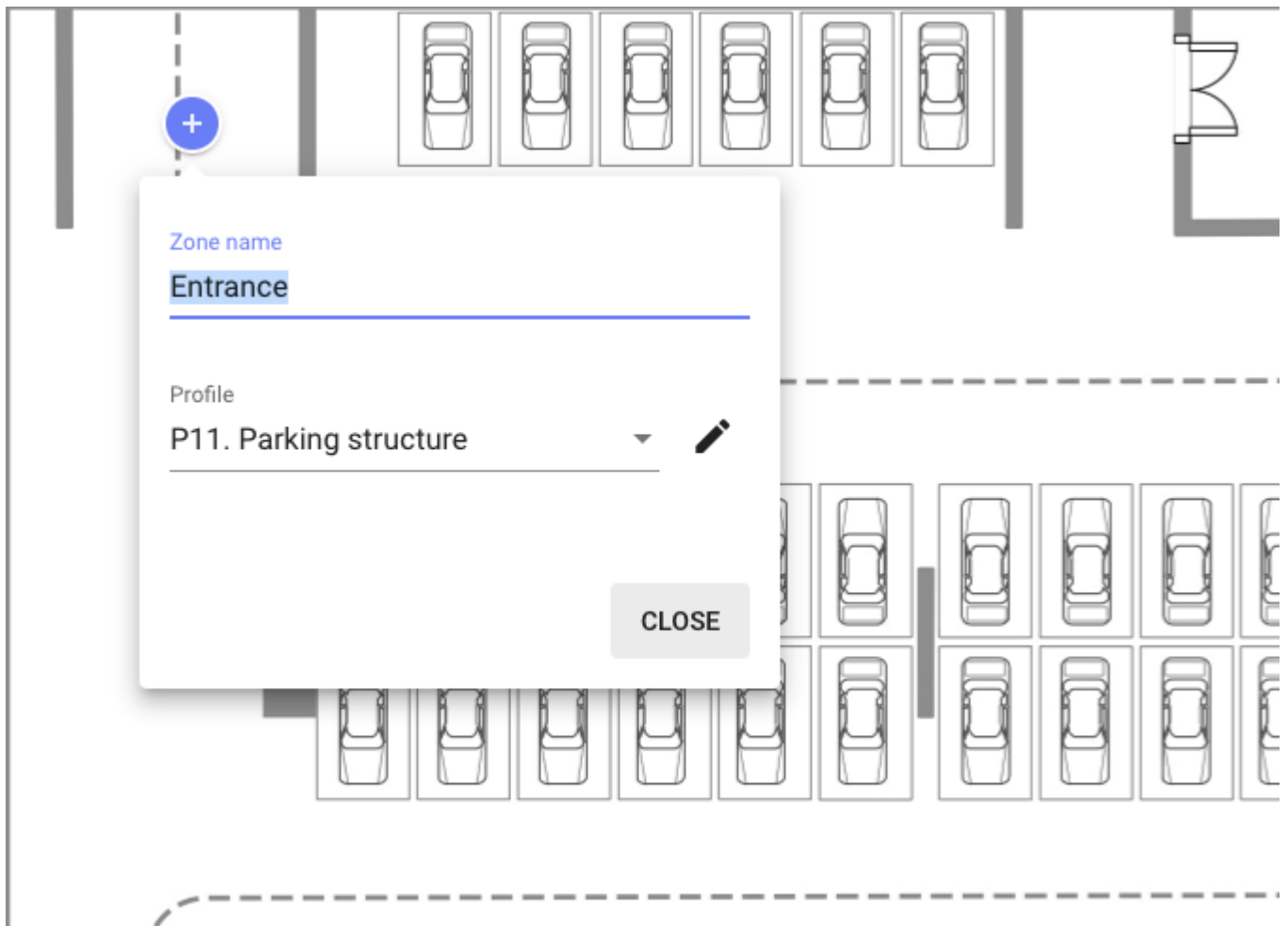
Note: You can configure the light control settings to support the "Reversed Photocell" use case - switching the light ON to a defined level during daytime and OFF at night time to meet entrance/exit transition zones requirements for eye adaptation purposes.

Commissioning

To be able to use the photocell, you must use the TruBlu commissioning web and mobile apps.

TruBlu web app

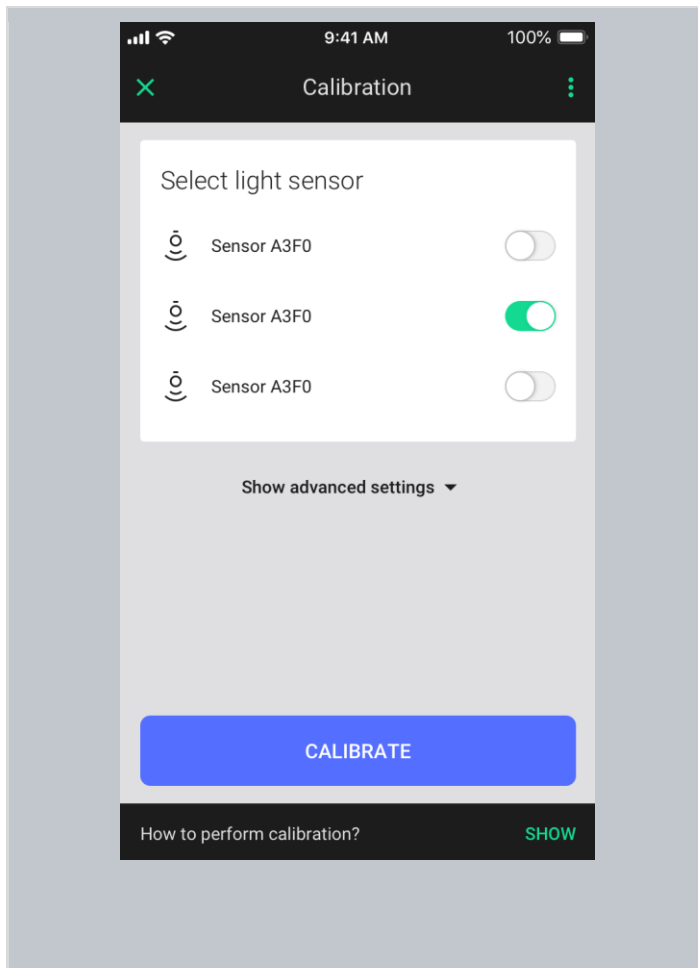
1. Define appropriate lighting zones
2. The profile selected for the zone needs to have a photocell scenario applied.
3. To create a profile based on the photocell scenario, press **NEW PROFILE** on the list of profiles.
4. You may also select one of the available photocell based profiles and click the **"EDIT"** pen icon to open the profile customization options.




5. Adjust the profile settings (see [Profile settings](#) section for details) and click **SAVE**.

TruBlu mobile app

1. Go to the space where you will be using the photocell based light control.
2. Open the project, select the desired area and zone with the TruBlu mobile app.
3. After adding all devices to the zone, you must perform calibration. You can calibrate devices by pressing the **CALIBRATE** button in the **DEVICES** or in the **SETTINGS** tab.



4. Select a light sensor by switching the toggle next to the light sensor to the right.
5. Confirm by pressing the **CALIBRATE** button.

HINT: After pressing the sensor icon  a device starts blinking. This helps to quickly identify the luminaire.

NOTE: Once the calibration process is completed, it will restore automatic control only in a zone where calibration is performed; all other linked zones go to their occupancy light level.

Profile settings

Segment	Parameter	Description
Night (light level settings during the night)	Night starts below	Threshold of the light level reported by the light sensor, below which the lighting is switched to the night settings. The night light level threshold must be less than the Day threshold. HINT: Make sure that the difference between night and light levels is sufficient to prevent light from switching frequently at the transition between day and night. HINT: If the controlled light is affecting the light sensor, please see the Troubleshooting section.
	Default	The light level to which the lighting is switched on when it gets dark (if the occupancy level is specified, this will trigger only when the space is vacant).
	Occupied	The light level to which the lighting is switched on when occupancy is detected. The "Adjust light when occupied" option needs to be selected.
Day (light level settings during the day)	Day starts above	Threshold of the level reported by the light sensor, above which the lighting is switched to the day settings. It must be greater than the night threshold. HINT: Make sure that the difference between day and light levels is sufficient to prevent light from switching frequently at the transition between day and night. HINT: If the controlled light is affecting the light sensor, please see the Troubleshooting section.
	Default	The light level to which the lighting is switched on when it gets bright (if the occupancy level is specified, this will trigger only when the space is vacant).

	Occupied	The light level to which the lighting is switched on when occupancy is detected. The “Adjust light when occupied” option needs to be selected.
Occupancy timeout	Duration	The time for which the light is maintained at the defined level after occupancy is detected. Available only when the “adjust light when occupied” option is selected for Day or Night settings.
Fade time	Duration	The time in which a particular light level is reached when transitioning between day & night or vacant & occupied levels.
Manual override timeout	Time	Makes lighting return automatically to default settings. When disabled, the automatic operation needs to be restored manually.
Power up behavior	Keep light off	The light will remain off on power-up.
	Restore	The light will return to the last level before the power failure.
	Defined light level	The light will come on at this brightness on power-up.
Low/high-end trim	Min	The minimum light level that can be achieved can be adjusted automatically or manually (e.g. with a wall switch).
	Max.	The maximum light level that can be achieved automatically or manually (e.g. with a wall switch).

Example applications

Simple photocell profile for Outdoor lighting

Sequence of operation

- The light is switched ON to 100% at dusk (when the light level reported by the light sensor falls below 35 lux)
- The light is switched OFF at dawn (when the light level reported by the light sensor exceeds 70 lux)
- The manual override can be used for special events. Automatic operation has to be restored manually.

Settings

The settings interface is organized into several panels:

- Night**: Includes a help icon, an unchecked checkbox for "Adjust level when occupied", a threshold of 35 LX for "Night starts below", and a "Default" light level slider set to 100%.
- Day**: Includes a help icon, an unchecked checkbox for "Adjust level when occupied", a threshold of 70 LX for "Day starts above", and a "Default" light level slider set to 0%.
- Occupancy timeout**: Shows "Duration (disabled)" set to 10 min.
- Fade time**: Shows "Duration" set to 1 sec.
- Manual override timeout**: Includes a toggle switch (turned off) and "Time" set to 2 hrs.
- Power up behavior**: Includes radio buttons for "Keep light off", "Restore" (selected), and "Defined light level".
- Low/high-end trim**: Includes a "Min." slider at 0% and a "Max." slider at 100%.

Reversed Photocell for Entrance/Exit zones

Sequence of operation

- The light is ON to 100% during the day (when the light level reported by the light sensor exceeds 70 lux).
- The light is switched OFF during the night (when the light level reported by the light sensor falls below 35 lux).
- The manual override can be used for special events. Automatic operation has to be restored manually.

Settings

Night ⓘ Adjust level when occupied

Night starts below
35 LX

Default

Light level
0 %

Day ⓘ Adjust level when occupied

Day starts above
70 LX

Default

Light level
100 %

Occupancy timeout

Duration (disabled)
10 min

Fade time ⓘ

Duration
1 sec

Manual override timeout ⓘ

Time
 2 hrs

Power up behavior ⓘ

Keep light off
 Restore
 Defined light level

Low/high-end trim ⓘ

Min. 0 % Max. 100 %

Photocell with occupancy for Parking lot

Sequence of operation

- The light is switched ON to 30% at dusk (when the light level reported by the light sensor falls below 35 lux).
- The light level during the night is raised to full output when occupancy is detected and dims back to 30% after 20 minutes.
- The light is switched OFF at dawn (when the light level reported by the light sensor exceeds 70 lux).
- The manual override can be used for special events and return to automatic operation 2hrs after the space is vacant.

Settings

Night ? Adjust level when occupied

Night starts below
35 LX

Default
Light level
30 %

Occupancy
Light level
100 %

Day ? Adjust level when occupied

Day starts above
70 LX

Default
Light level
0 %

Fade time ?

Duration
1 sec

Occupancy timeout ?

Duration
20 min

Manual override timeout ?

Time
 2 hrs

Low/high-end trim ?

Min. 0 % Max. 100 %

Power up behavior ?

Keep light off
 Restore
 Defined light level

Troubleshooting

Light from the controlled lights is affecting the sensor

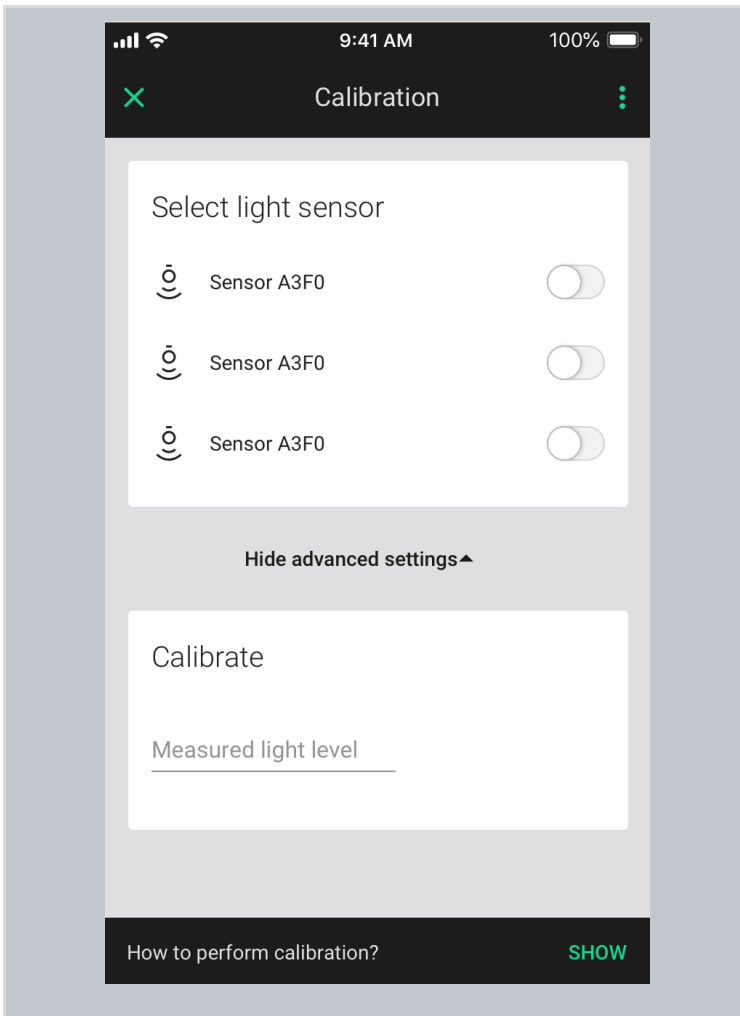
If you have issues with the light that is controlled in a photocell scenario that affects the light sensor and causes the light to switch off immediately after it is switched on, please adjust the day & night thresholds to include the hysteresis:

1. Go to the Zone with the Photocell based profile in the mobile app
2. Open the Test tab
3. Switch the light ON to full output and check the lux level reported by the sensor on the sensors panel (LUX_{HIGH})
4. Switch the light OFF and check the lux level reported by the sensor on the sensors panel (LUX_{LOW})
5. Make sure that the day and night threshold values meet the following formula: **Day threshold - Night threshold < $LUX_{HIGH} - LUX_{LOW}$**

Issues with the light sensor

If you have issues with the accuracy of the light sensor, you may use the calibrate section in the advanced settings. During the calibration process, the selected sensor is being configured to control the light in the zone. This is important in cases where there is more than one light sensor as we can use only one of them to control the light.

The calibration process can be also used to adjust the response of the light sensor, especially if the sensor is not reporting the light level reaching it accurately. This is valuable in case you have some issues with the sensor accuracy or the sensors in the field are not calibrated, every single one reports different values in similar conditions.



Calibration:

- Use a light meter to measure the light level where the light sensor is installed.
- Enter the LUX value measured by the light meter in the **Measured light level** field.
NOTE: If you don't input any lux level the response of the sensor won't be adjusted.
- After entering the "Measured light level" LX value in the input field provided, tap the CALIBRATE button to confirm.
- The calibration of the light sensor will start immediately.

Contact Information

Support:

TruBlu.Support@mcwonginc.com

Business development:

support@McWongInc.com

For more information
please visit:

www.McWongInc.com

Our office:

McWong International Inc.
1921 Arena Blvd.
Sacramento, CA 95834